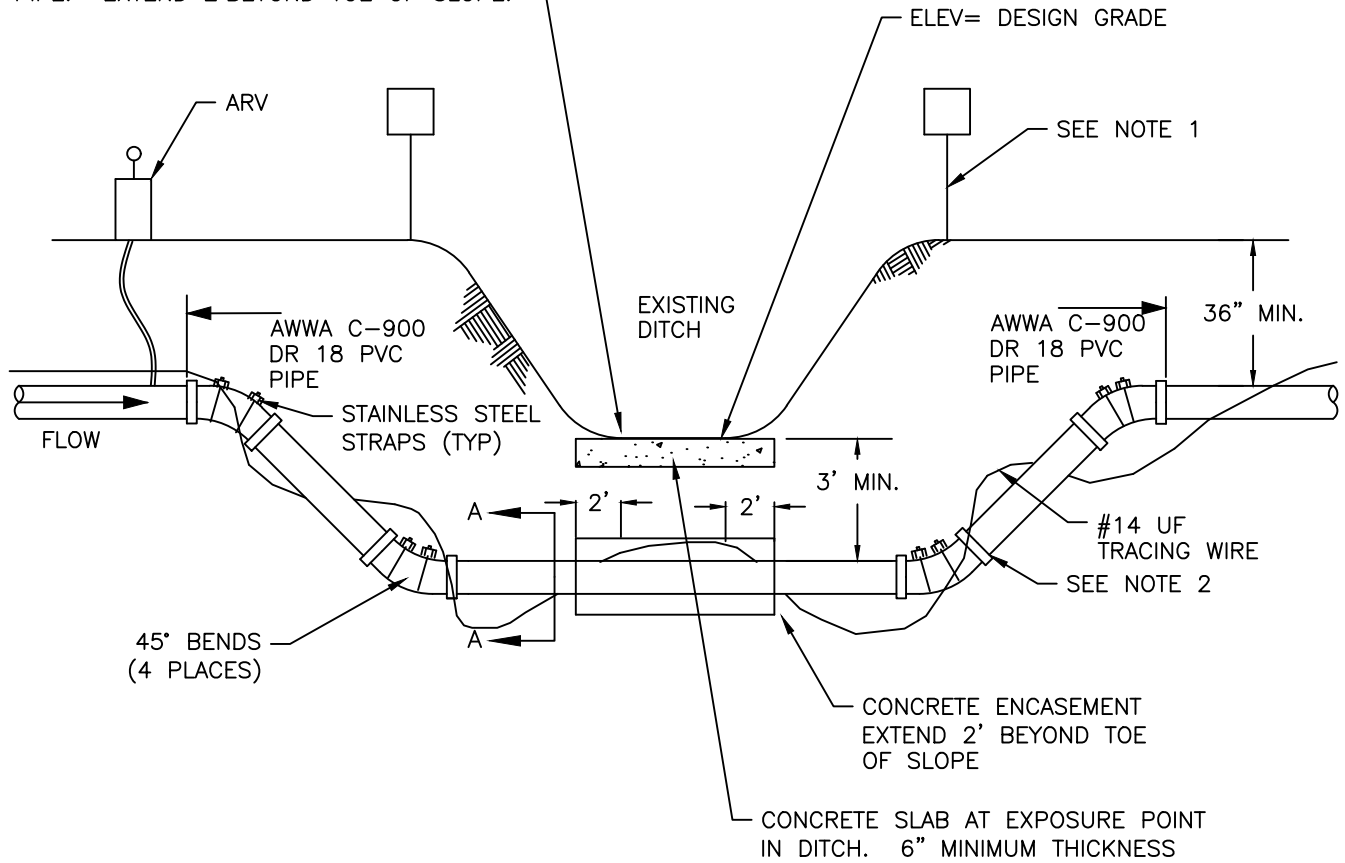
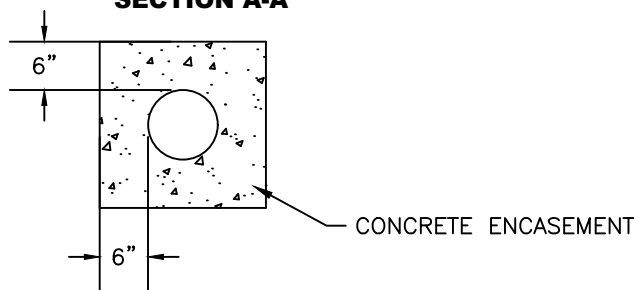


6' WIDE CONCRETE SLAB CENTERED ON PIPE. EXTEND 2' BEYOND TOE OF SLOPE.



SECTION A-A



NOTES:

1. WARNING SIGNS REQUIRED BOTH SIDES OF DITCH (SEE SLWG-12B)
2. ALL JOINTS SHALL BE RESTRAINED.
3. AIR RELEASE VALVE SHALL NOT BE INSTALLED ON RECLAIMED WATER OR POTABLE WATER MAINS.



**MINIMUM CONSTRUCTION STANDARDS FOR
ST. LUCIE WEST SERVICES DISTRICT
450 SW UTILITY DRIVE,
PORT SAINT LUCIE, FL 34986
PHONE: (772) 340-0220**

**CANAL OR DRAINAGE DITCH
CROSSING**

DETAIL: SLWG-12A
DATE: 03/2020
SCALE: N.T.S.
SHEET: 1 OF 2