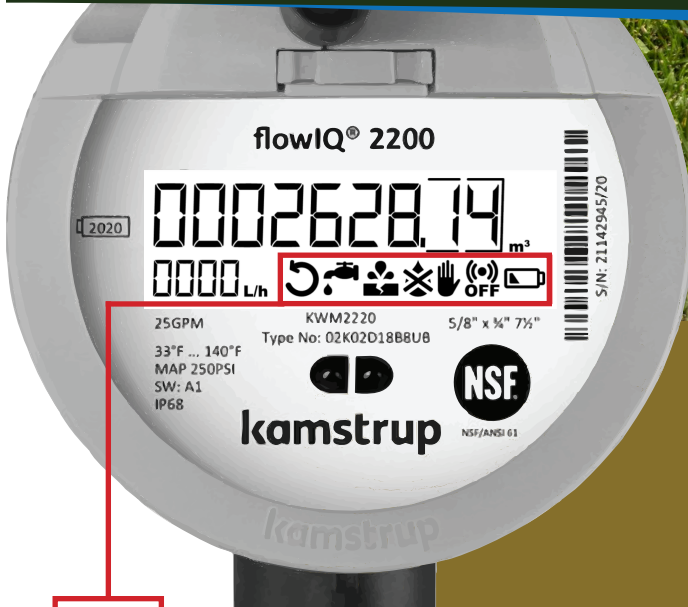


# Check for Water Leaks Using Your Kamstrup Meter.



KAMSTRUP Smart Meters are installed outside of your residence or facility. They can aid you in detecting possible water leaks. After checking for leaks on common areas like toilets and faucets, use the meter codes below to identify potential issues.



**REVERSE FLOW:** Arrow shows water flowing the wrong direction.

**LEAK:** Flashing symbol indicates water has flowed for 24 hours, suggesting a leak.

**BURST:** Flashing symbol indicates flow exceeds a preset limit for 30 minute suggesting a pipe break.

**DRY:** Flashing symbol means the meter is not filled with water.

**TAMPER:** Icon shows an attempted fraud, making the meter invalid for billing.

**RADIO OFF:** Indicates the meter is in transport mode with the radio off. It activates automatically after ½ liter of water flows through the meter.

**BATTERY LOW:** Icon indicates battery life is under 6 months.

The information codes and symbols will automatically turn off when the conditions that activated them no longer exist. **If you find a leak, please have it repaired as soon as possible to avoid higher bills. Contact us with any questions.**

CONNECT WITH US



[www.slwsd.org](http://www.slwsd.org)



(772) 340-0220  
[customerservice@slwsd.org](mailto:customerservice@slwsd.org)  
St. Lucie West Services District  
450 SW Utility Drive, PSL, FL 34986

